

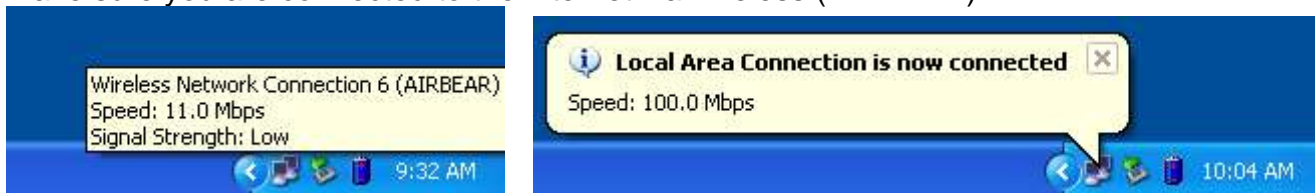
Wireless Printing- Baylor Law School

Students have the option to print directly from their laptops, through either a wireless connection (AIRBEAR) or a wired connection (accessed by plugging into one of the green Ethernet jacks).

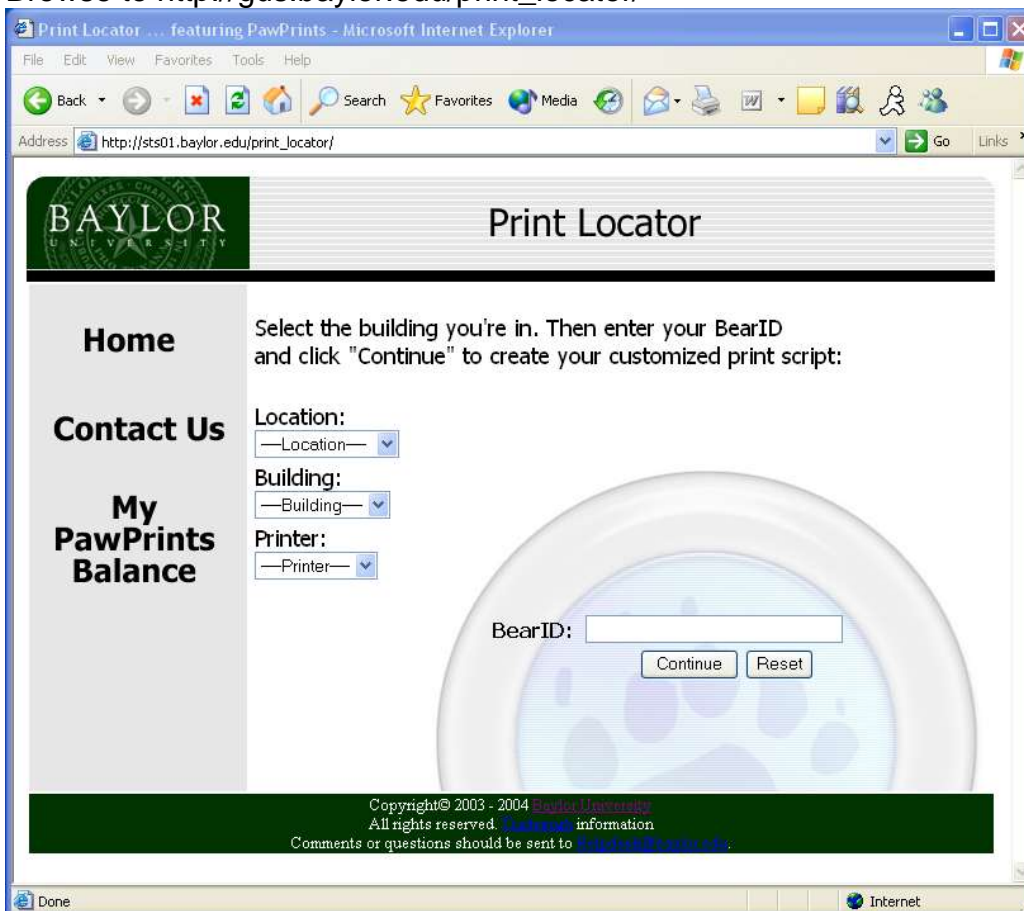
Two printers have been designated for this service. "Law-South Lab 5" is located in the back half of the library lab and has a number 5 printed on the front. The second printer, "Student Lounge," is located by the phones in the student lounge.

In order to use this service, simply follow the instructions below.

1. Make sure you are connected to the internet via wireless (AIRBEAR).



2. Browse to http://gus.baylor.edu/print_locator/



3. Select "Miscellaneous" under "Location"

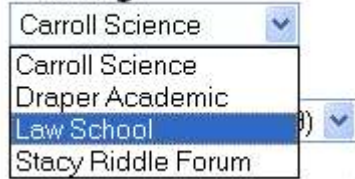
Location:



—Location—
—Location—
All
Libraries
Miscellaneous

4. Select “Law School” under “Building”


Building:



Carroll Science
Carroll Science
Draper Academic
Law School
Stacy Riddle Forum

5. Select a printer from “Printer”

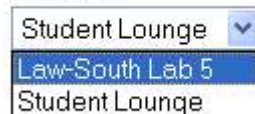
Printer:



Law-South Lab 5
Law-South Lab 5
Student Lounge

or

Printer:



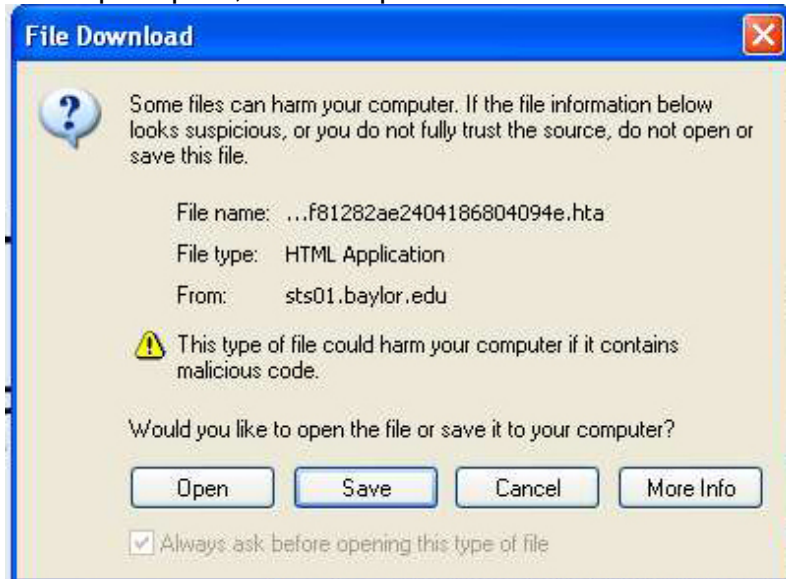
Student Lounge
Law-South Lab 5
Student Lounge

6. Type in your BearID in the “BearID” box and select “Continue.”



BearID: Your_BearID
Continue Reset

7. When prompted, select “Open”



File Download

Some files can harm your computer. If the file information below looks suspicious, or you do not fully trust the source, do not open or save this file.

File name: ...f81262ae2404186804094e.hta
File type: HTML Application
From: sts01.baylor.edu

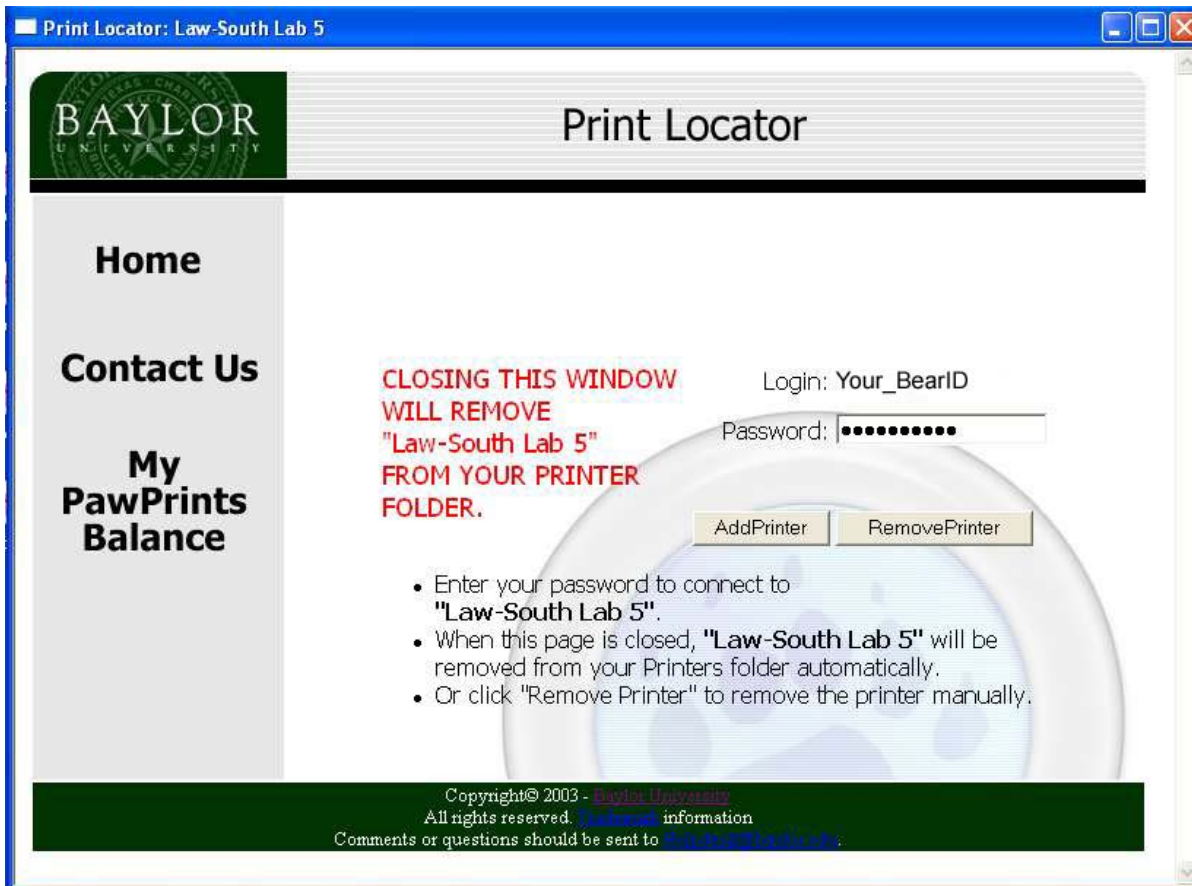
⚠ This type of file could harm your computer if it contains malicious code.

Would you like to open the file or save it to your computer?

Open Save Cancel More Info

Always ask before opening this type of file

8. Type in your BearID password and select “Add Printer”



- The “Printers and Faxes” dialogue box will open. The printer you have added will appear in the list and will be selected as the default printer. Once the “Status” has changed from “Opening” to “Ready” (this may take up to 30 seconds), you are ready to print. Please note that logging off or closing the “Print Locator” window will close the connection and remove the printer from your available printers. When you are finished, close out any windows left behind by the printer connection program.

Name	Documents	Status	Comments
HP LaserJet 1200...	0	Ready	
Law-South Lab 5 ...	0	Ready	
Microsoft Office ...	0	Ready	